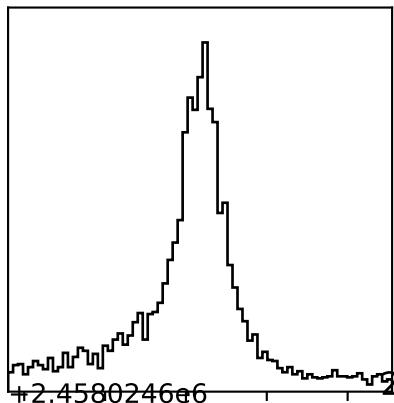
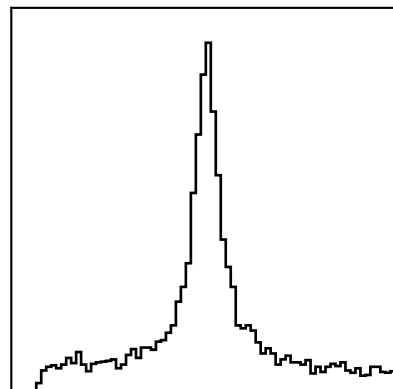


0.16700 ± 0.01900



+2.4580246e6

+2.458024.64910 ± 0.00410



T_{mid}

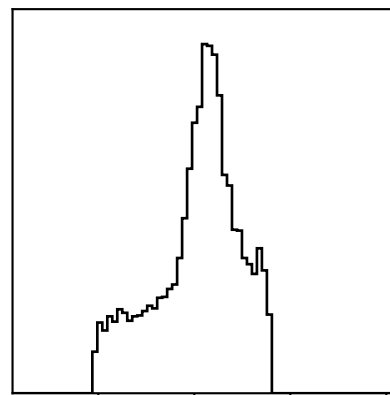
0.06
0.05
0.04
0.03

10.5
9.0
7.5
6.0

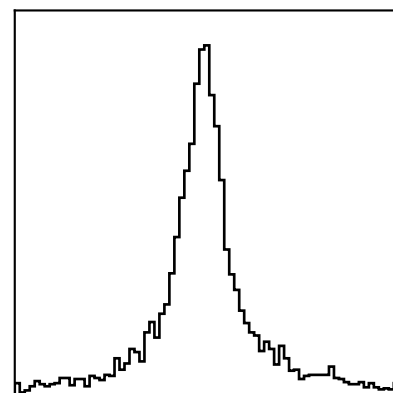
a/R_s

9.0
7.5
6.0

7.66000 ± 0.60000



0.02600 ± 0.00810



0.02600 ± 0.00810

a_2

0.06
0.04
0.02
0.00

0.08 0.12 0.16 0.20 0.24

0.03 0.04 0.05 0.06

6.0 7.5 9.0 10.5

0.00 0.02 0.04 0.06

R_p/R_s

+2.4580246e6
 T_{mid}

a/R_s

a_2