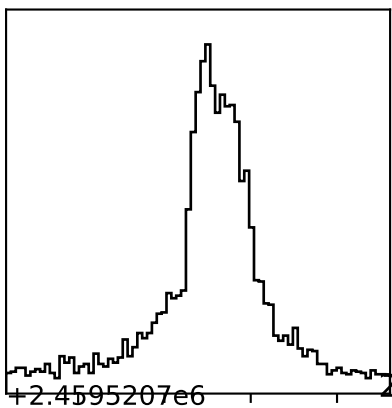
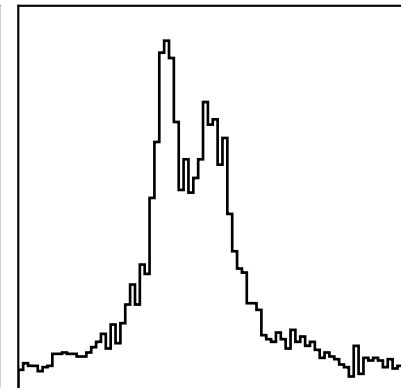


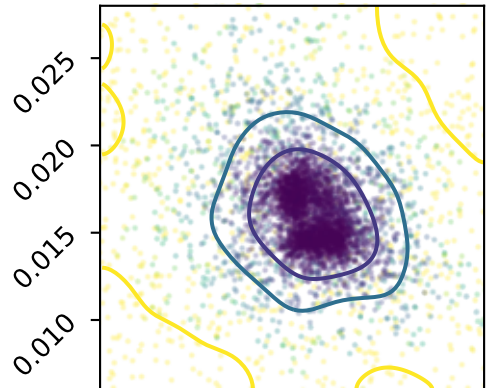
0.18780 ± 0.00890



+2.4595207e6

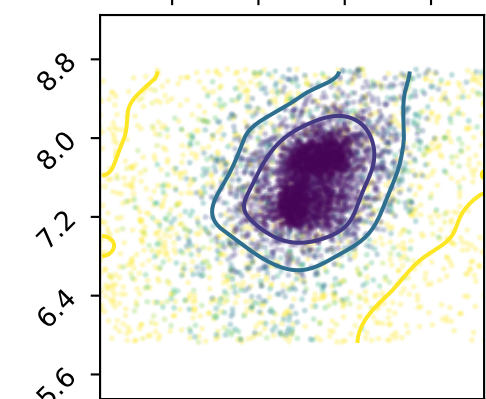


2459520.71700 ± 0.00220



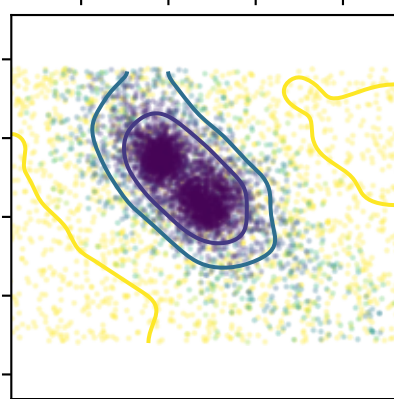
T_{mid}

0.025
0.020
0.015
0.010



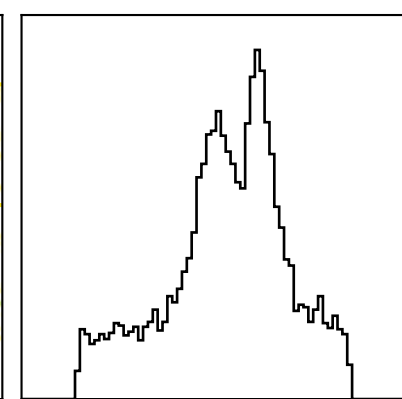
a/R_s

8.8
8.0
7.2
6.4
5.6

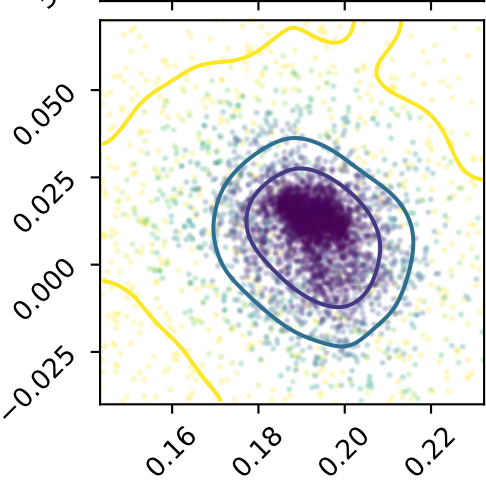


T_{mid}

0.025
0.020
0.015
0.010

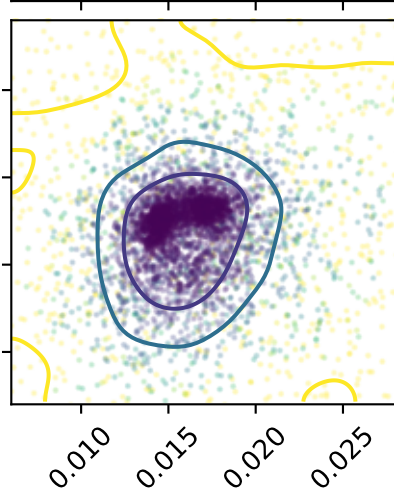


7.30000 ± 0.39000



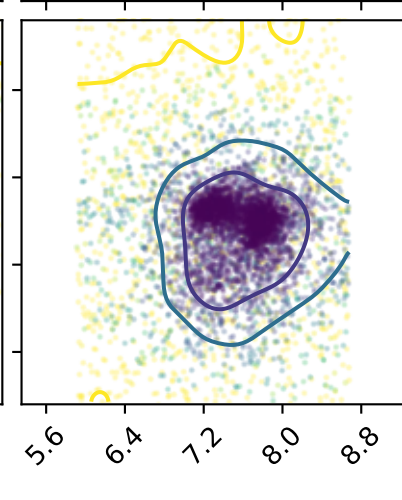
a_2

0.050
0.025
0.000
-0.025



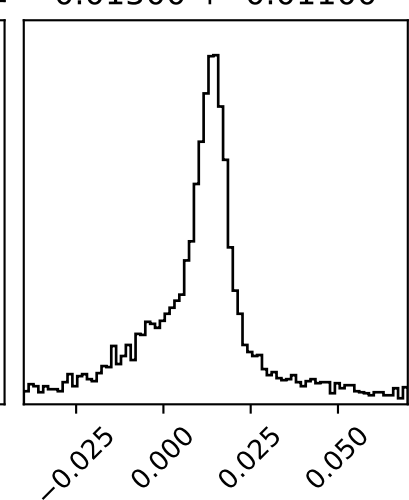
T_{mid}

0.025
0.020
0.015
0.010



a/R_s

8.8
8.0
7.2
6.4
5.6



0.01500 ± 0.01100

R_p/R_s

T_{mid} +2.4595207e6

a/R_s

a_2