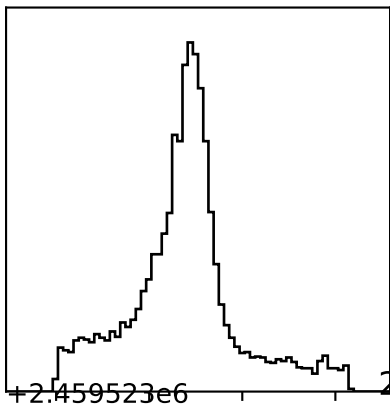
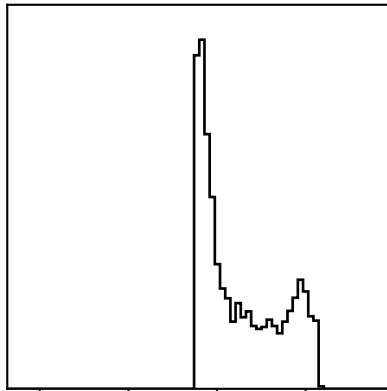
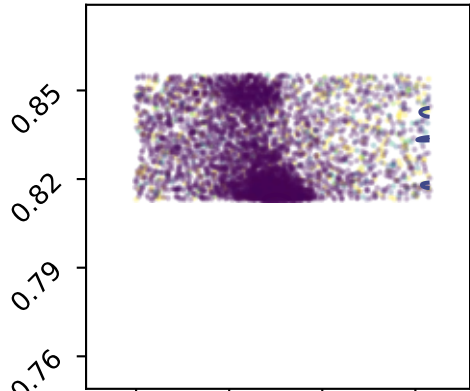


0.12200 \pm 0.03300

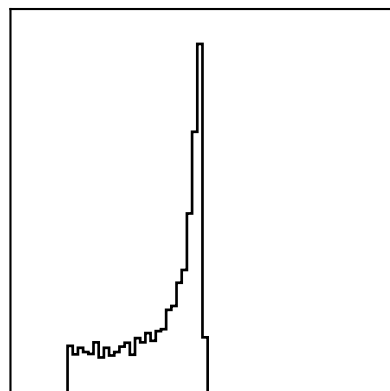
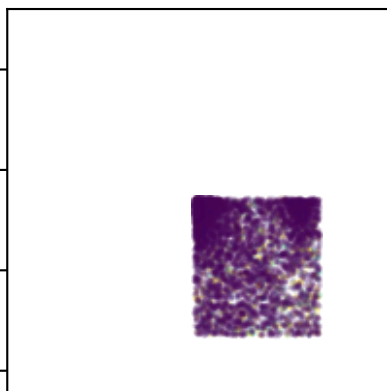
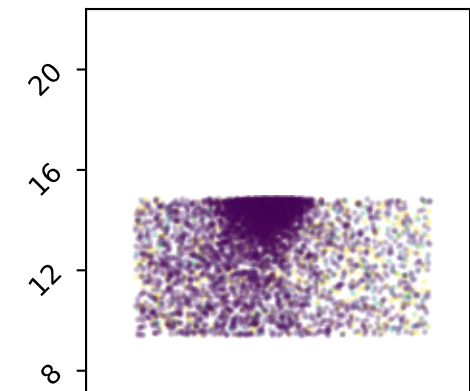


+2.459523e6

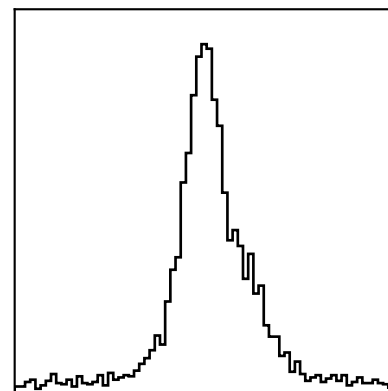
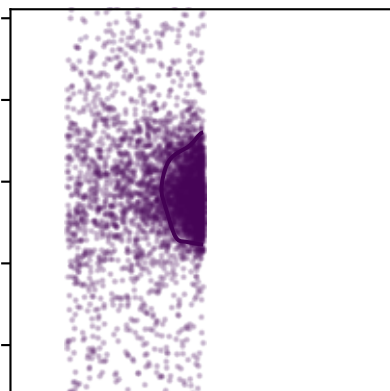
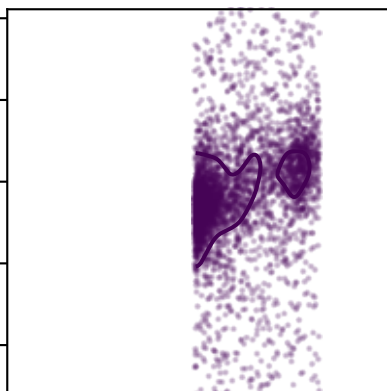
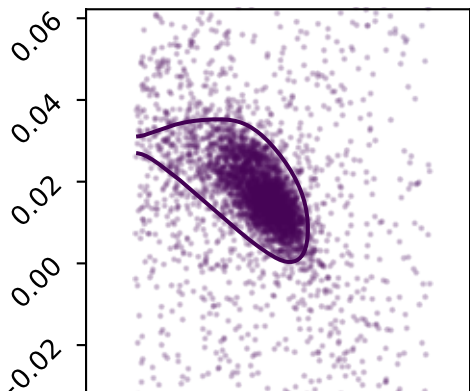
2459523.81400 \pm 0.01300



14.76000 \pm 1.53000



0.01520 \pm 0.00940



0.00 0.08 0.16 0.24

0.76 0.79 0.82 0.85

8 12 16 20

-0.02 0.00 0.02 0.04 0.06

R_p/R_s

+2.459523e6
 T_{mid}

a/R_s

a_2