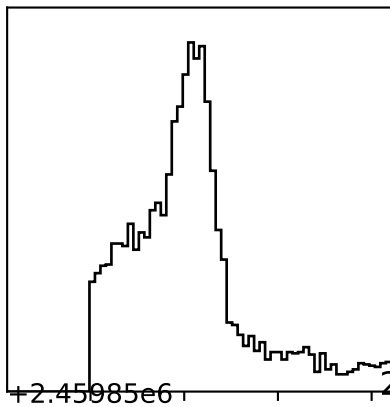
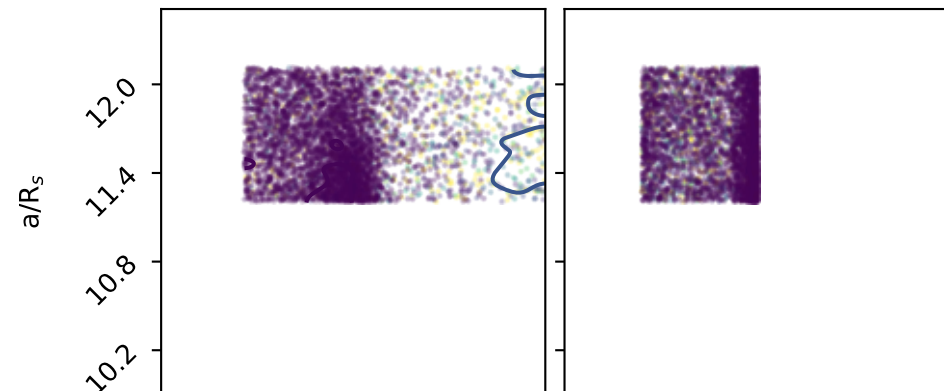
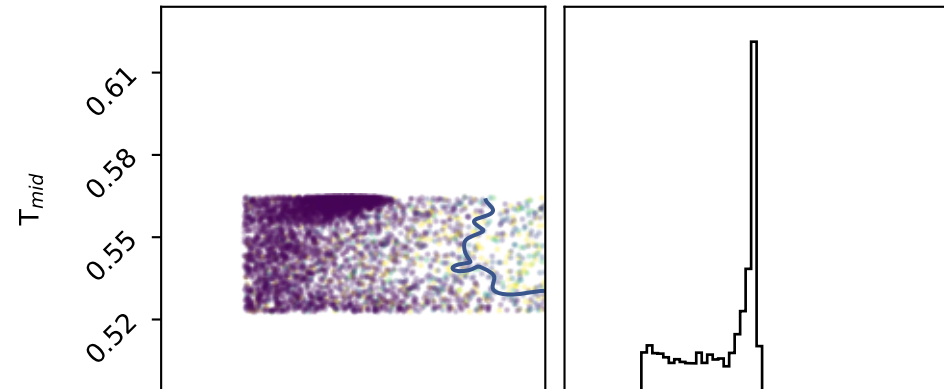


0.11600 ± 0.04100

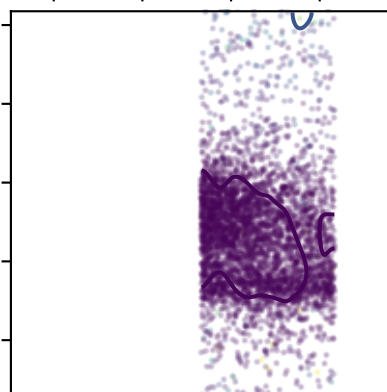
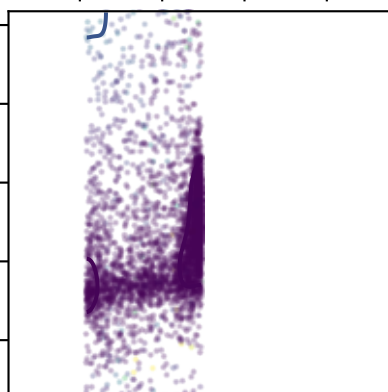
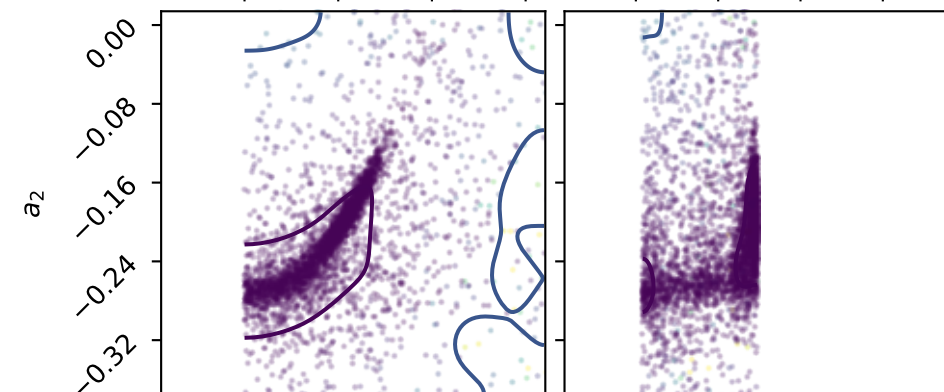
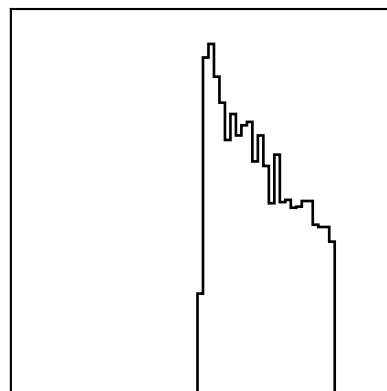


+2.45985e6

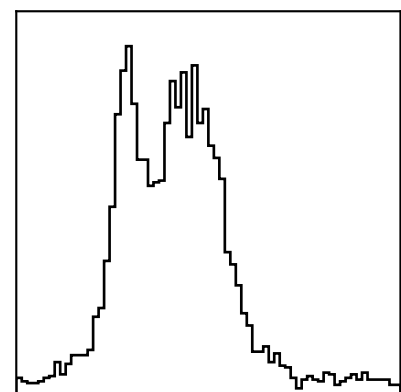
2459850.56400 ± 0.01400



11.21000 ± 0.26000



-0.18100 ± 0.03900



0.0 0.1 0.2 0.3  
 $R_p/R_s$

0.52 0.55 0.58 0.61  
 $T_{mid}$

10.2 10.8 11.4 12.0  
 $a/R_s$

-0.32 -0.24 -0.16 -0.08 0.00  
 $a_2$