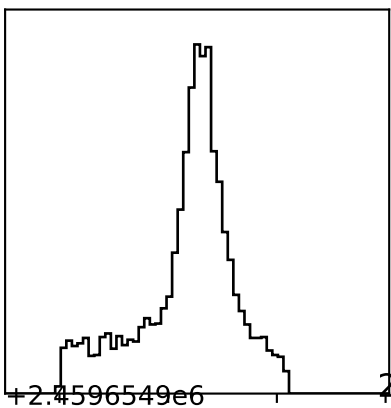
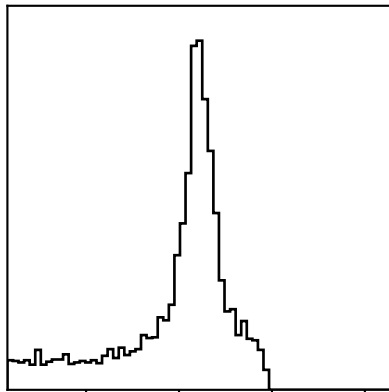


0.19000 ± 0.05300



+2.4596549e6

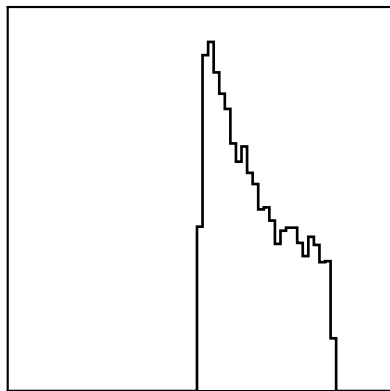
2459654.92330 ± 0.00620



$T_{mid}$

0.050  
0.035  
0.020  
0.005

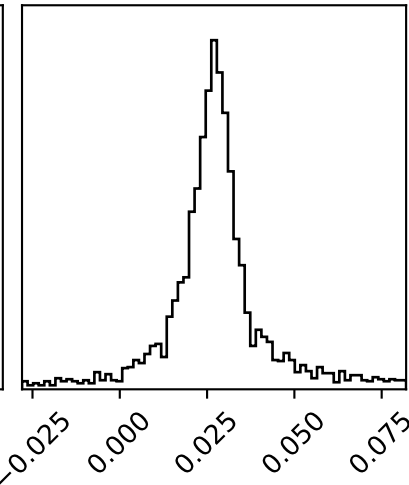
5.66000 ± 0.15000



$a/R_s$

6.3  
6.0  
5.7  
5.4  
5.1

0.02700 ± 0.01100



$a_2$

0.075  
0.050  
0.025  
0.000  
-0.025

$R_p/R_s$

$T_{mid} + 2.4596549e6$

$a/R_s$

