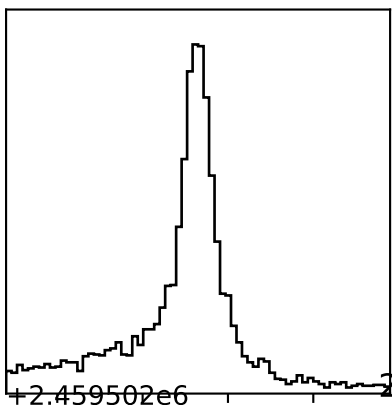
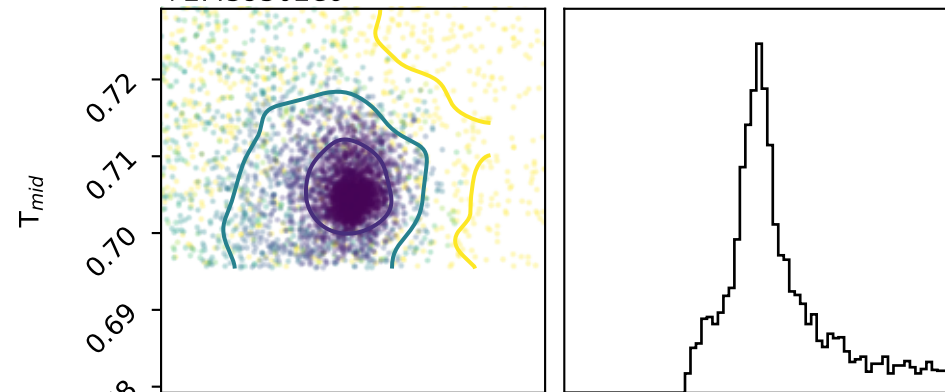


0.15900 ± 0.02700



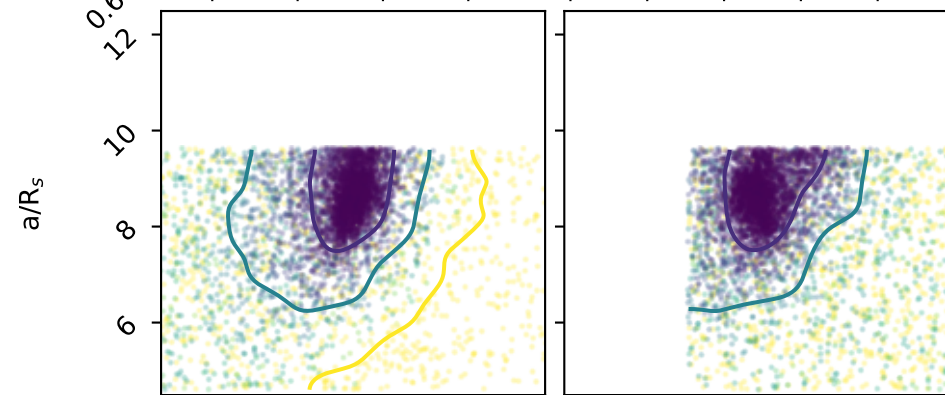
+2.459502e6

+2.459502.70420 ± 0.00500

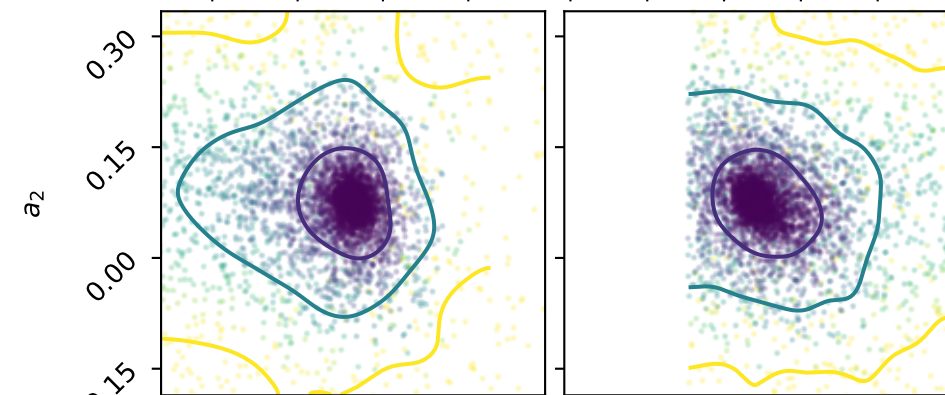


$T_{mid}$

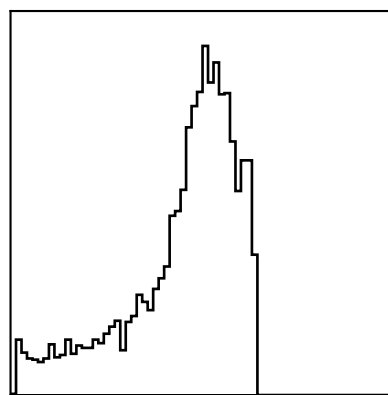
8.49000 ± 0.80000



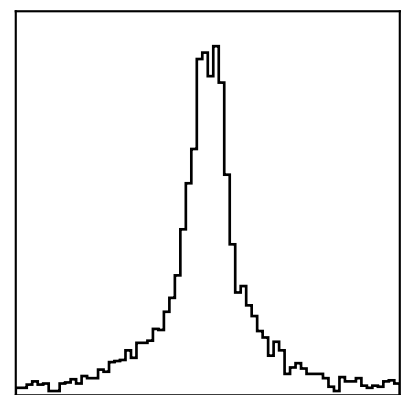
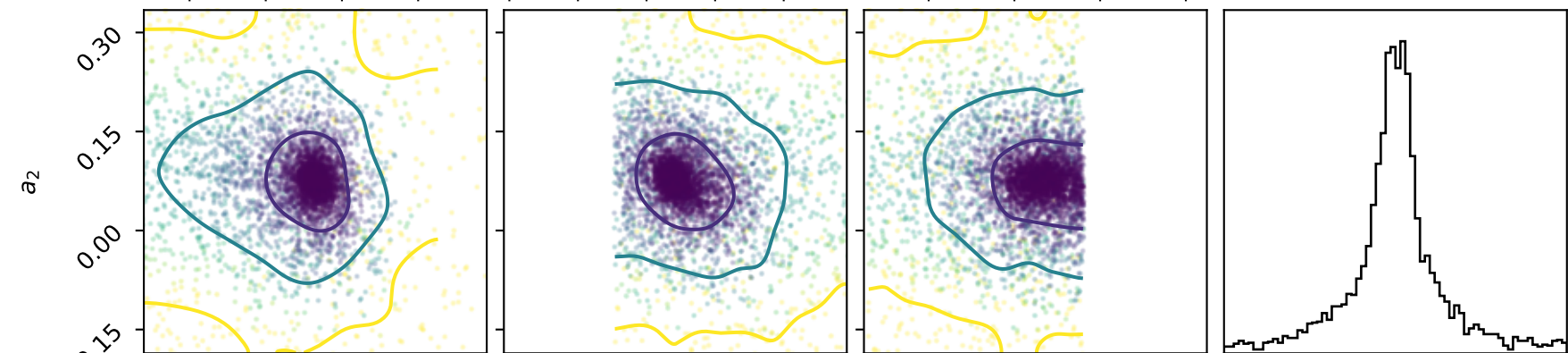
$a/R_s$



$a_2$



0.07400 ± 0.05200



$a_2$

0.06 0.12 0.18 0.24

0.68 0.69 0.70 0.71 0.72

6 8 10 12

-0.15 0.00 0.15 0.30

$R_p/R_s$

+2.459502e6  
 $T_{mid}$

$a/R_s$