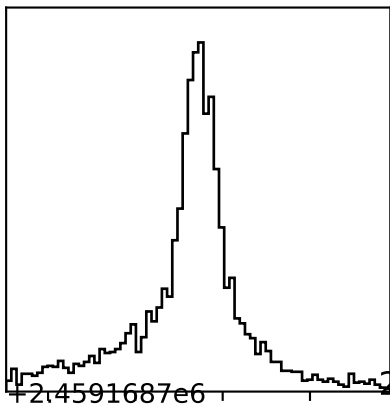
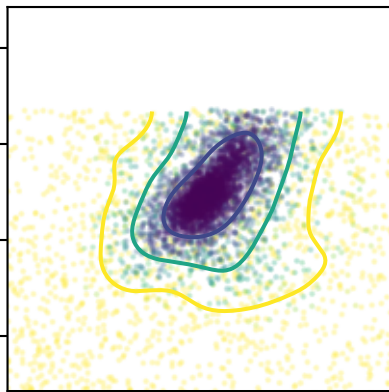
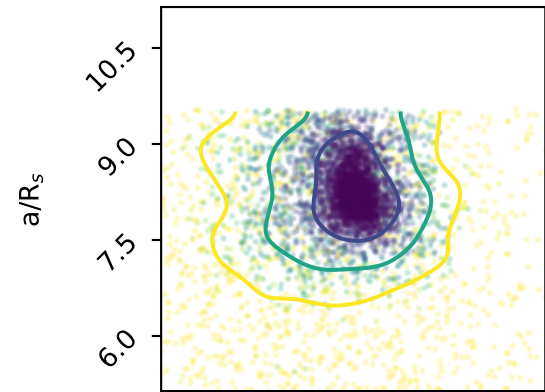
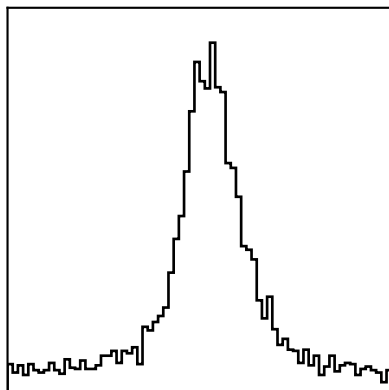
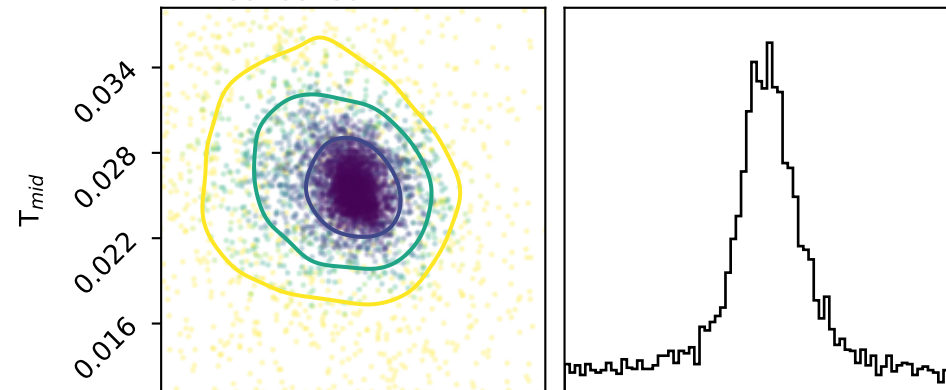


0.14300 ± 0.01100

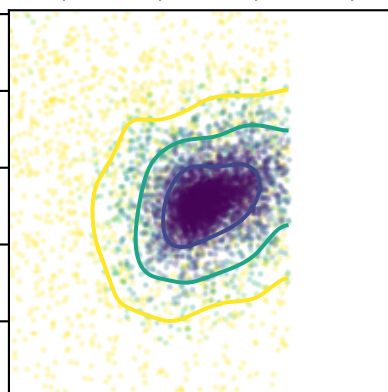
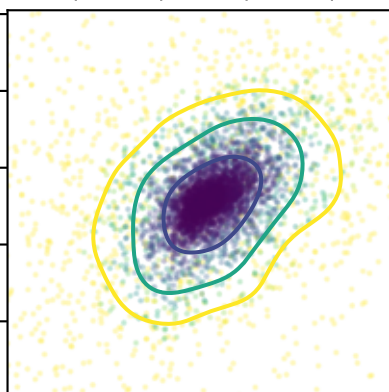
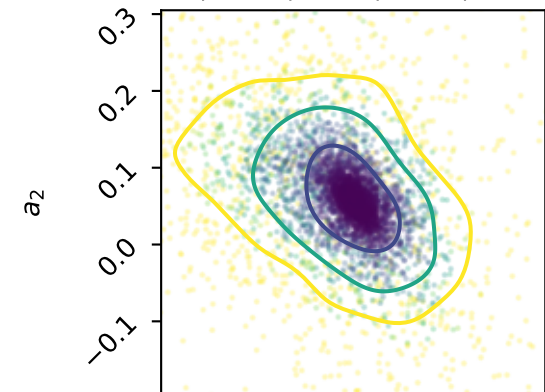
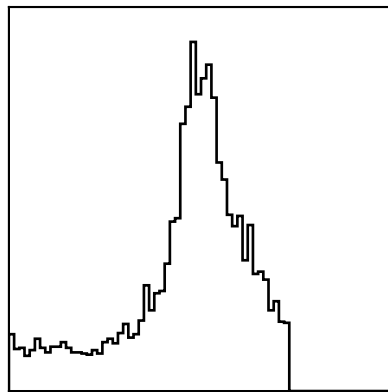


$+2.4591687e6$

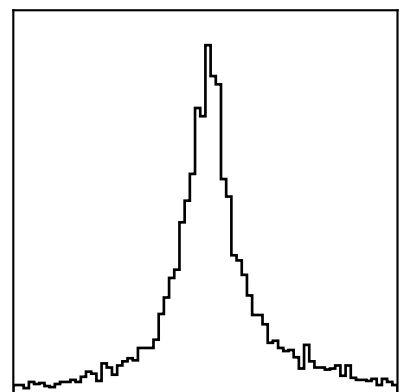
$-2.459168.72470 \pm 0.00270$



8.14000 ± 0.60000



0.05500 ± 0.05000



0.100 0.125 0.150 0.175  
 $R_p/R_s$

0.016 0.022 0.028 0.034  
 $T_{mid} + 2.4591687e6$

6.0 7.5 9.0 10.5  
 $a/R_s$

-0.1 0.0 0.1 0.2 0.3  
 $a_2$