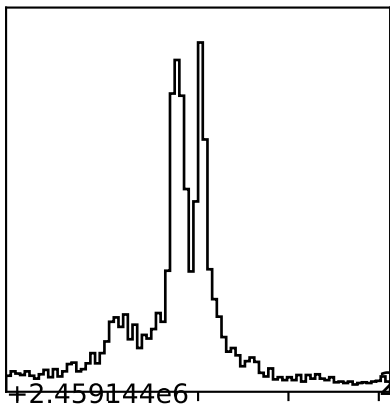
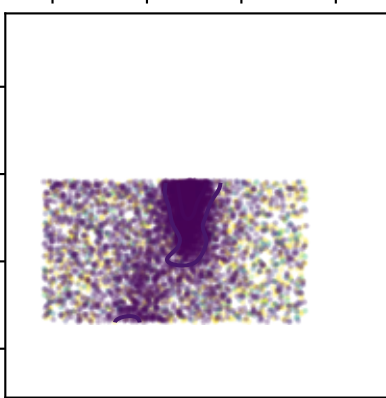
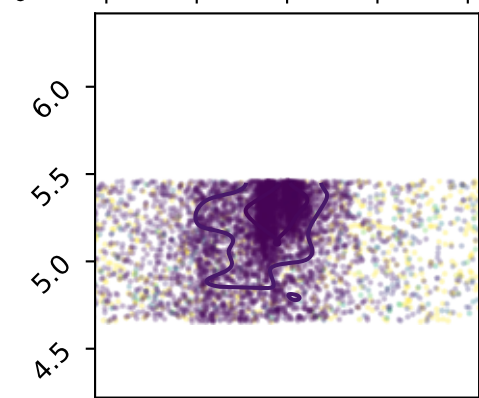
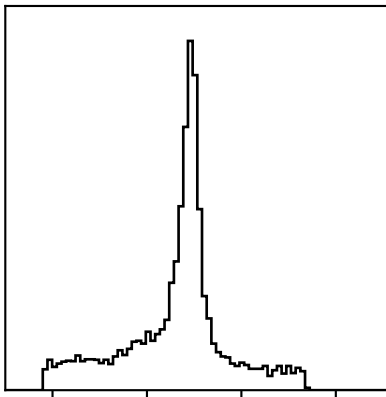
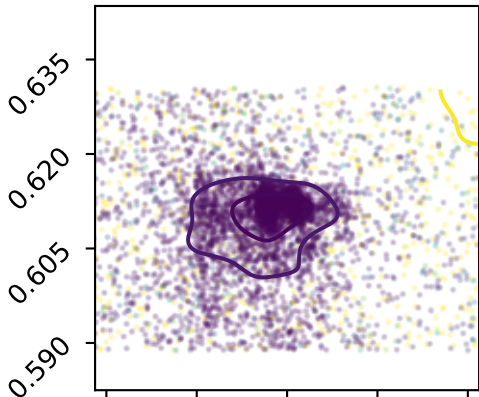


0.12000 ± 0.01700

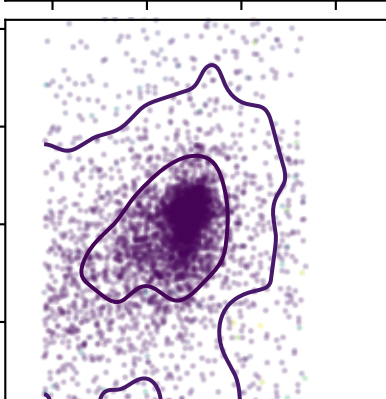
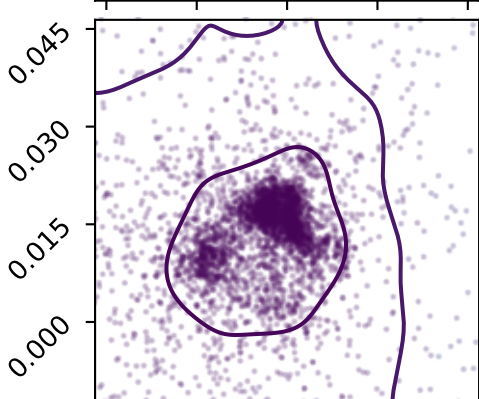
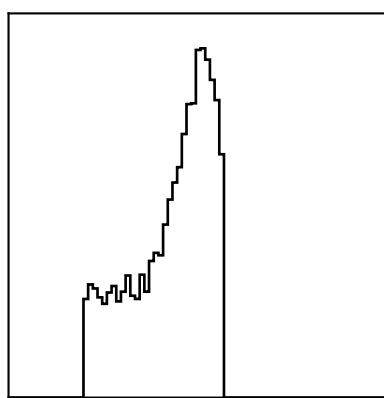


+2.459144e6

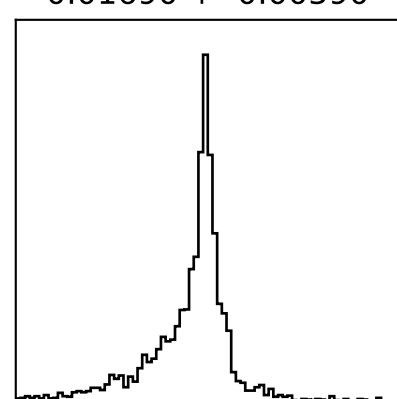
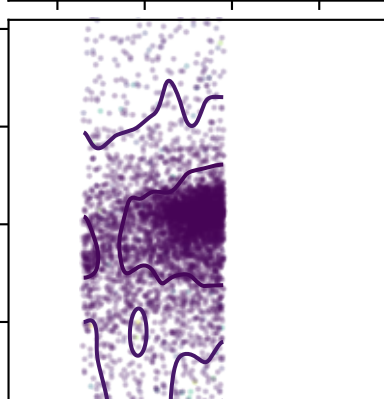
2459144.61300 ± 0.00610



5.32000 ± 0.22000



0.01690 ± 0.00590



0.04 0.08 0.12 0.16 0.20

0.590 0.605 0.620 0.635

4.5 5.0 5.5 6.0

0.000 0.015 0.030 0.045

R_p/R_s

$T_{mid} + 2.459144e6$

a/R_s

a_2