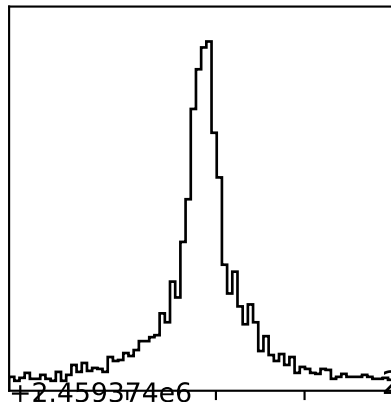
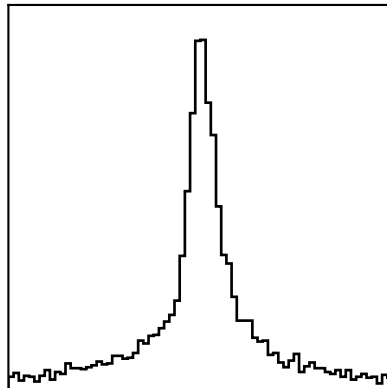
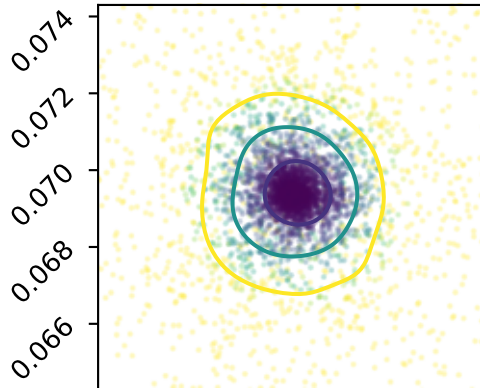


0.10700 \pm 0.00260

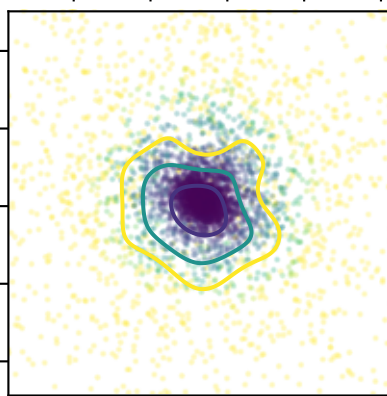
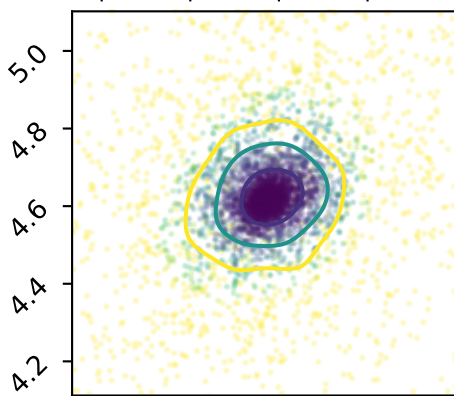


$+2.459374e6$

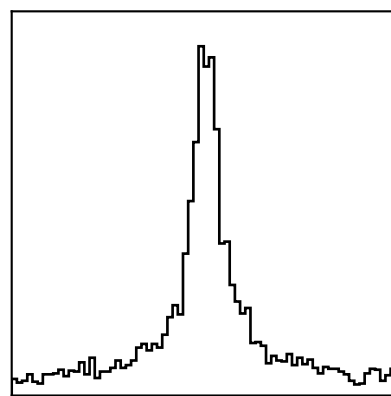
$-2.459374.06930 \pm 0.00100$



T_{mid}



4.60700 \pm 0.09900



a/R_s

0.096 0.102 0.108 0.114 0.120

0.066 0.068 0.070 0.072 0.074

4.2 4.4 4.6 4.8 5.0

R_p/R_s

$T_{mid} + 2.459374e6$

a/R_s