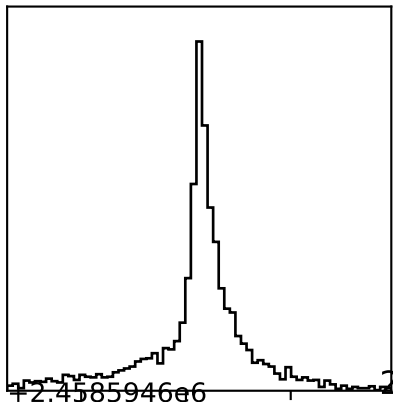
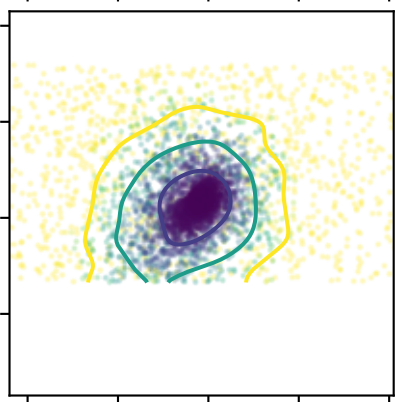
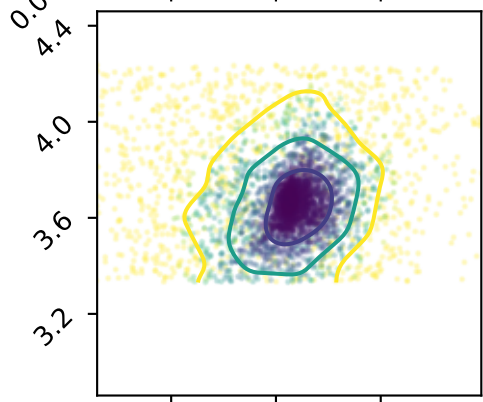
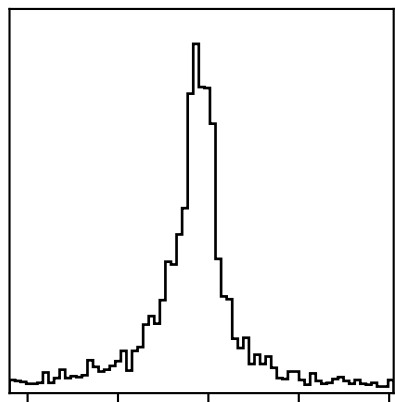
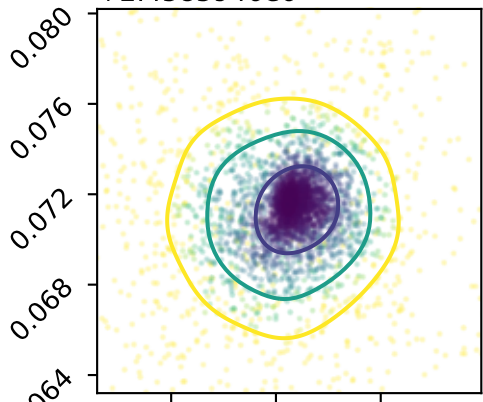


0.12190 ± 0.00550

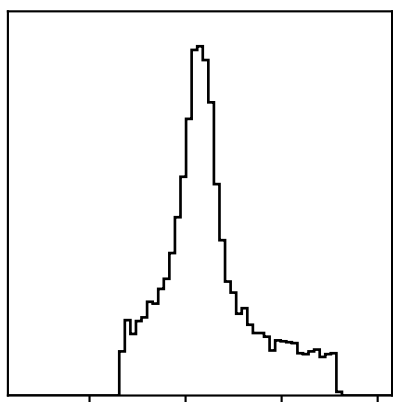


$+2.4585946e6$

$2458594.67170 \pm 0.00170$



3.66000 ± 0.16000



0.105 0.120 0.135

0.064 0.068 0.072 0.076 0.080

3.2 3.6 4.0 4.4

R_p/R_s

$T_{mid} + 2.4585946e6$

a/R_s