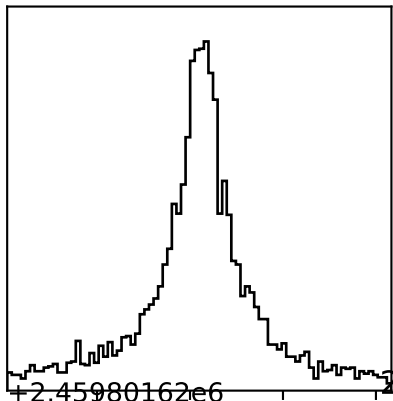
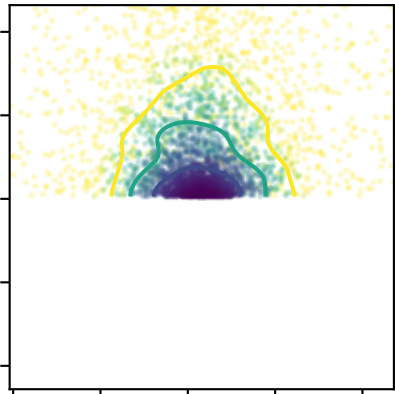
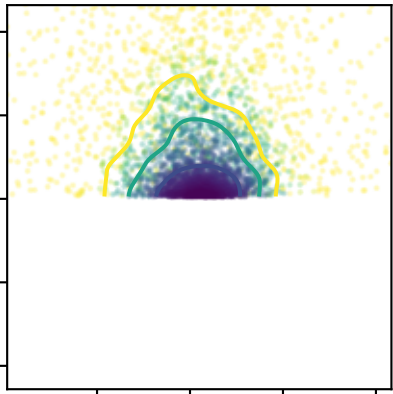
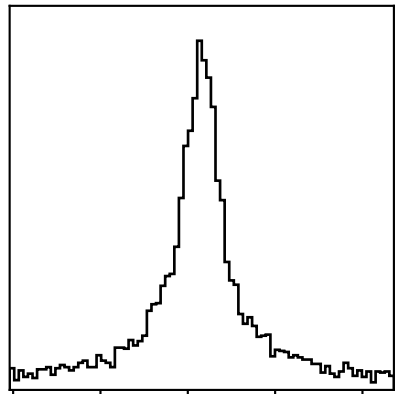
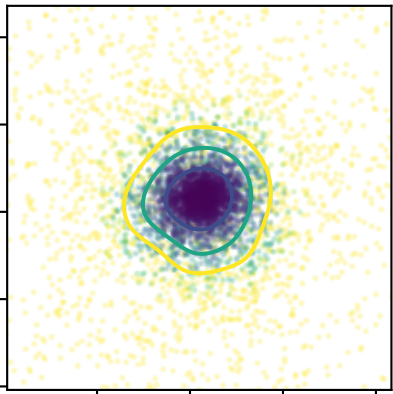


0.05865 ± 0.00062

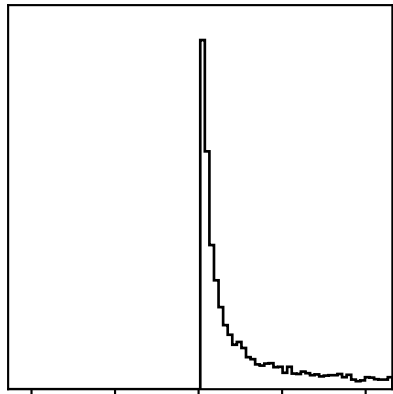


$+2.45980162e6$

$-2.459801.62516 \pm 0.00044$



16.25100 ± 0.02300



0.0570 0.0585 0.0600 0.0615

0.003 0.004 0.005 0.006 0.007

16.15 16.20 16.25 16.30 16.35

R_p/R_s

T_{mid}

a/R_s