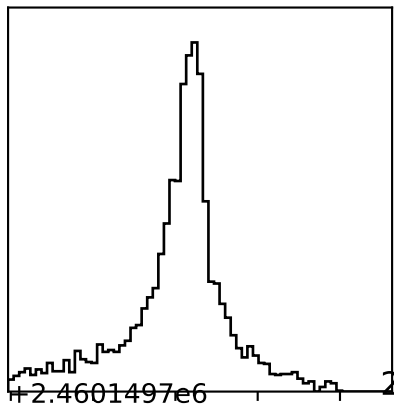
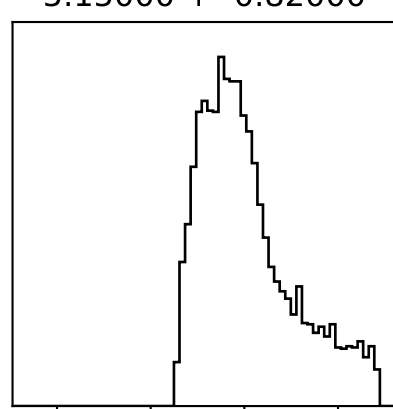
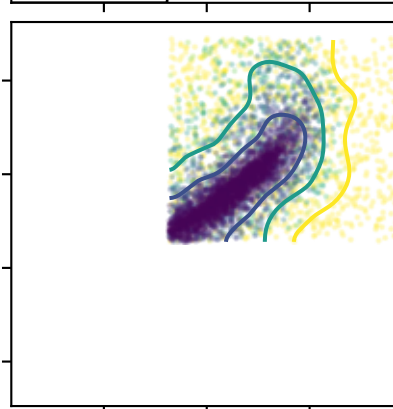
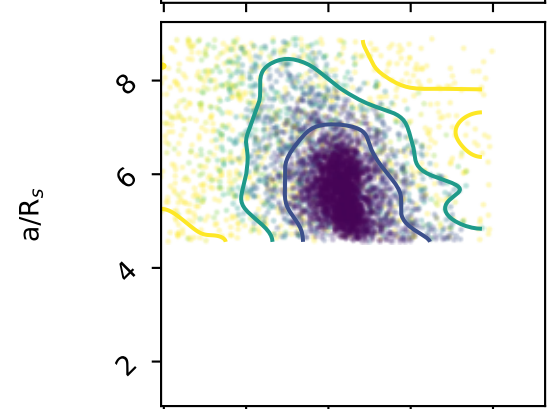
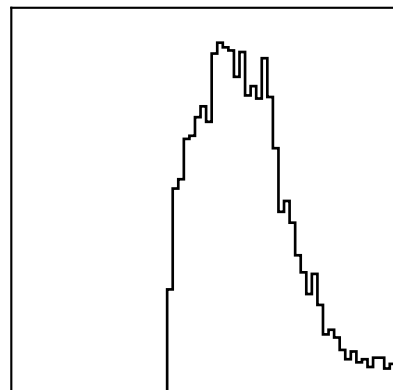
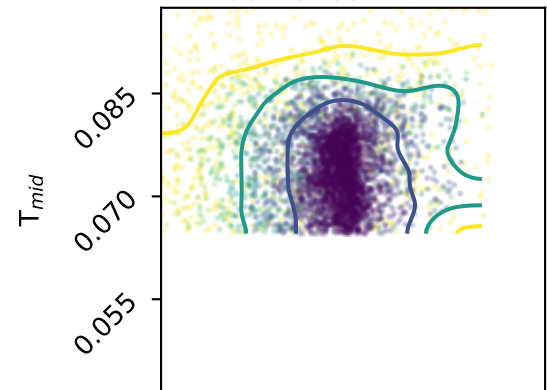


0.25800 ± 0.02800

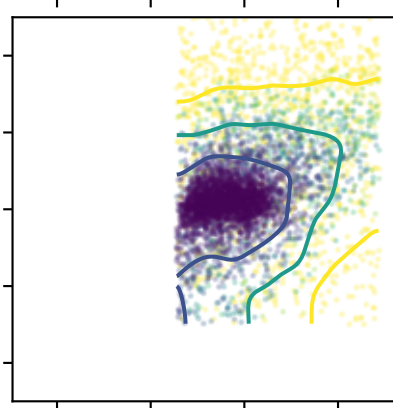
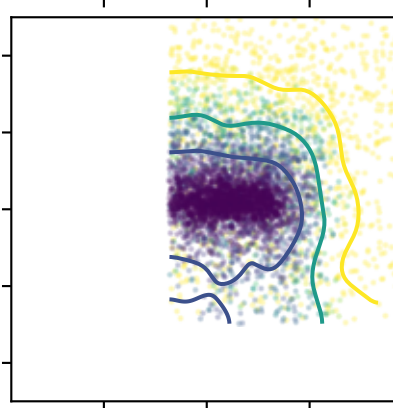
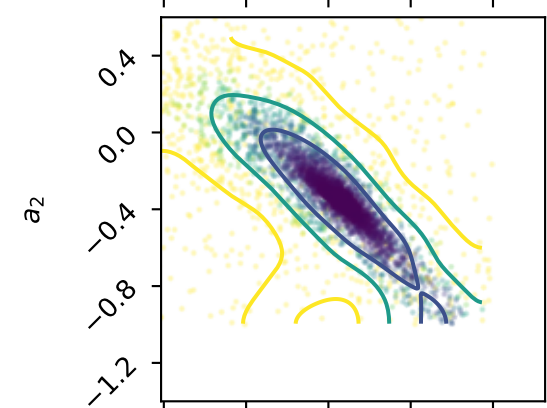


$+2.4601497e6$

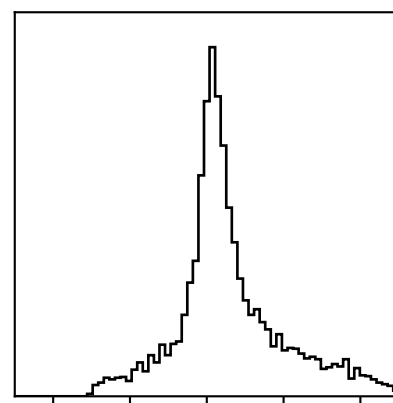
$2460149.76950 \pm 0.00560$



5.15000 ± 0.82000



-0.40000 ± 0.20000



0.12 0.18 0.24 0.30 0.36

0.055 0.070 0.085

2 4 6 8

-1.2 -0.8 -0.4 0.0 0.4

R_p/R_s

$T_{mid} + 2.4601497e6$

a/R_s

a_2